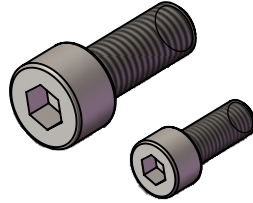
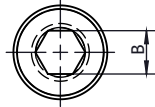
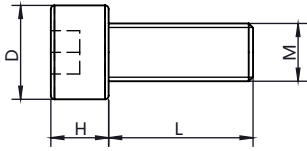




代码	类型	材质	表面处理	选型示例: HA41-NYS-M6-L16 HA41-NYS-M8-L30 HA41-NYS-M12-L35										
HA41-NYS	内六角圆柱头螺栓	SUS304	-											
HA41-NYS	4	6	7	4	3	HA41-NYS	8	12	13	8	6			
		8						16						
		10						20						
		12						25						
	5	8	8.5	5	4		12	16	20	25	18	12	10	
		10												30
		12												35
		16												40
	6	12	10	6	5		16	20	25	30	35	40		
		16												
		20												
		25												



代码	类型	材质	表面处理	选型示例: HA41-BYS-M6-L16 HA41-BYS-M8-L30 HA41-BYS-M10-L35										
HA41-BYS	内六角半圆头螺栓	SUS304	-											
HA41-BYS	4	6	7.6	2.2	2.5	HA41-BYS	8	12	14	4.4	5.0			
		8						16						
		10						20						
		12						25						
	5	8	9.5	2.8	3.0		16	20	25	30	17.5	5.5	6.0	
		10												35
		12												40
		16												45
	6	12	10.5	3.3	4.0		20	25	30	35	40			
		16												
		20												
		25												

