

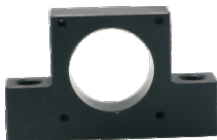


型号 ①代码 · ② F - ③ C
AIAQ40 - 25

■ 请按步骤①~③选择型号和参数后进行订购。



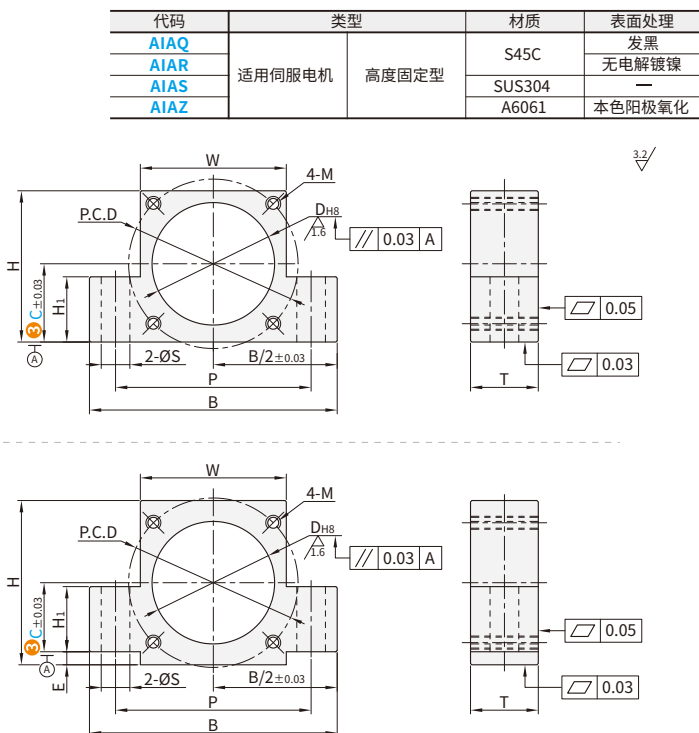
型号区分: ④ 代码 7 天发货



适用规格(E尺寸为平底型):

AIAQ/AIAR/AIAS/AIAZ38-22/40-22
AIAQ/AIAR/AIAS/AIAZ38-25/40-25
AIAQ/AIAR/AIAS/AIAZ60-30/60S-30
AIAQ/AIAR/AIAS/AIAZ60-34/60S-34
AIAQ/AIAR/AIAS/AIAZ90-48

适用其余规格



① 代码	型号 适用电机法兰 ② F *	③ C	D _{H8}	P.C.D	M	H	H ₁	E	W	B	P	T	ØS	建议丝杠支座		建议电机规格					
														固定侧	支撑侧	法兰规格	止口规格	安装 P.C.D	安装孔		
AIAQ AIAR AIAS AIAZ	38	13	30	45	M3	40	10	7	40	59	49.5	9.5	4.5	AISWA6 AISW6	AIUN6 AIUNA6	38	45	Ø3.4	30	46	Ø4.5
	40			46	M4											46	Ø4.5				
	38	17	30	45	M3	40	15	3	40	59	49.5	9.5	4.5	AISWA8 AISW8	AIUN8 AIUNA8	38	45	Ø3.4	30	46	Ø4.5
	40			46	M4											46	Ø4.5				
	38	22	30	45	M3	42	15	平底	40	59	49.5	9.5	4.5	AIFW10	AIFN10	38	45	Ø3.4	30	46	Ø4.5
	40			46	M4											46	Ø4.5				
	60	22	50	70	M5	60	15	8	60	85	72.5	12.5	6.6			60	70	Ø5.5	50	60S	Ø4.5
	60S				M4											60S	Ø4.5				
	38	25	30	45	M3	45	15	平底	40	59	49.5	9.5	4.5	AISWA10 AISW10 AISWA12 AISW12 AIFW12	AIUN10 AIUNA10 AIUN12 AIUNA12 AIFN12	38	45	Ø3.4	30	46	Ø4.5
	40				46											M4	46	Ø4.5			
	60	25	50	70	M5	60	20	5	60	85	72.5	12.5	6.6			60	70	Ø5.5	50	60S	Ø4.5
	60S				M4											60S	Ø4.5				
	60	28	50	70	M5	60	20	2	60	85	72.5	12.5	6.6			60	70	Ø5.5	50	60S	Ø4.5
	60S				M4											60S	Ø4.5				
	80	28	70	90	M6	80	25	12	80	113	96.5	16.5	9	AIFW15	AIFN15	80	90	Ø6.5	70	80S	Ø6
	80S				M5											80S	Ø6				
	60	30	50	70	M5	60	20	平底	60	85	72.5	12.5	6.6	AISWA15 AISW15 AISWA20 AISW20	AIUN15 AIUNA15 AIUN20 AIUNA20	60	70	Ø5.5	50	60S	Ø4.5
	60S				M4											60S	Ø4.5				
	80	30	70	90	M6	80	25	10	80	113	96.5	16.5	9			80	90	Ø6.5	70	80S	Ø6
	80S				M5											80S	Ø6				
	60	34	50	70	M5	64	20	平底	60	85	72.5	12.5	6.6			60	70	Ø5.5	50	60S	Ø4.5
	60S				M4											60S	Ø4.5				
	80	34	70	90	M6	80	25	6	80	113	96.5	16.5	9	AIFW20	AIFN20	80	90	Ø6.5	70	80S	Ø6
	80S				M5											80S	Ø6				
	90	35	80	100	M6	90	25	10	90	131	110.5					90	100	Ø6.5	80	90S	Ø6
	90S				M5											90S	Ø6				
	100	35	95	115	M8	105	25	17.5	105	146	125.5	20.5	11	AISW25	AIUN25 AIUNA25	100	115	Ø9	95	100A	Ø6.5
	100A				M6											100A	Ø6.5				
	110	35	110	130	M8	110	25	20	110	151	130.5					110	130	Ø9	95	110S	Ø9
	110S				M6											110S	Ø9				
90	48	80	100	M6	93	25	平底	90	131	110.5					90	100	Ø6.5	80	90S	Ø6.5	
90S				M5											90S	Ø6.5					
100	48	95	115	M8	105	25	4.5	105	146	125.5	20.5	11	AIFW25	AIFN25	100	115	Ø9	95	100A	Ø6.5	
100A				M6											100A	Ø6.5					
110	48	110	130	M8	110	25	7	110	151	130.5					110	130	Ø9	95	110S	Ø9	
110S				M6											110S	Ø9					

① * 带S为松下电机, 带A为安川电机, 不带有其它品牌电机。



邮箱: Service@srdfaa.com



传真: 0755-8957-5523

SRD 仕瑞达