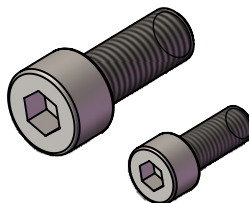
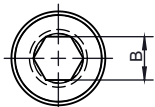
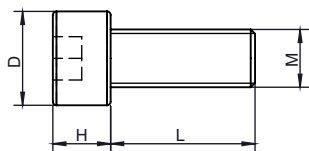




代码	类型	材质	表面处理
HA41-NYS	内六角圆柱头螺栓	SUS304	-

选型示例：
[HA41-NYS-M6-16](#)
[HA41-NYS-M8-30](#)
[HA41-NYS-M12-35](#)



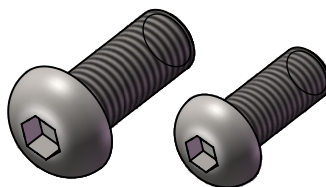
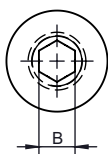
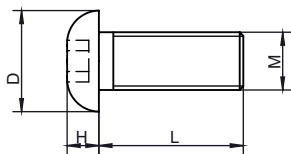
代码	M	L	D	H	B	代码	M	L	D	H	B	
HA41-NYS	4	6	7	4	3	HA41-NYS	8	12	13	8	6	
		8						16				
		10						20				
		12						25				
	5	8	8.5	5	4			16				
		10						20				
		12						25				
		16						30				
	6	6	10	6	5			12				
								16				20
								20				25
								12				16
							20		25			

铝合金型材框架
通用紧固件

14

代码	类型	材质	表面处理
HA41-BYS	内六角半圆头螺栓	SUS304	-

选型示例：
[HA41-BYS-M6-16](#)
[HA41-BYS-M8-30](#)
[HA41-BYS-M10-35](#)



代码	M	L	D	H	B	代码	M	L	D	H	B	
HA41-BYS	4	6	7.6	2.2	2.5	HA41-BYS	8	12	14	4.4	5.0	
		8						16				
		10						20				
		12						25				
		16						30				
	5	8	9.5	2.8	3.0			16				
		10						20				
		12						25				
		16						30				
	6	6	10.5	3.3	4.0			12				
								16				20
								20				25
							10	16	17.5	5.5	6.0	
								20				25

